

PRODUCT SPECIFICATIONS

18" x 36" X-Large Tiles

Available as groutable glue down or as NovaLay[®] loose lay installation.



Honed Travertine-Cloud (V3) NBT001/NBT001L



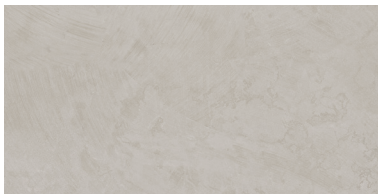
Honed Travertine-Mist (V3) NBT002/NBT002L



Brushed Concrete-Ash (V2) NBT003/NBT003L



Brushed Concrete-Smoke (V2) NBT004/NBT004L



Brushed Concrete-Powder (V2) NBT005/NBT005L



Honed Travertine-Fog (V3) NBT006/NBT006L

Pre-Packaged Multi-Width 5", 6", & 7" Wide x 48" Long Planks

Available as glue down installation.



Weathered Oak-Cottage (V2) NBM001



Weathered Oak-Bungalow (V2) NBM002



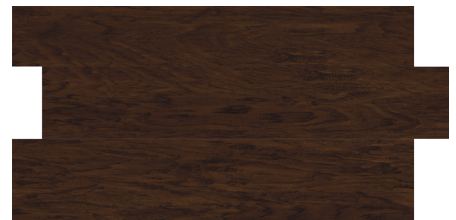
Weathered Oak-Cabin (V3) NBM003



Burnished Hickory-Villa (V1) NBM004



Burnished Hickory-Chalet (V1) NBM005



Burnished Hickory-Lodge (V1) NBM006

9" x 60" X-Large Planks Available as glue down or as NovaLay[®] loose lay installation.



NBP001/NBP001L

Grand Oak-Snowshoe (V2)



NBP002/NBP002L

Grand Oak-Tahoe (V2)



NBP003/NBP003L

Grand Oak-Vail (V2)



NBP004/NBP004L

Grand Oak-Breckenridge (V2)



NBP005/NBP005L

Grand Oak-Aspen (V2)



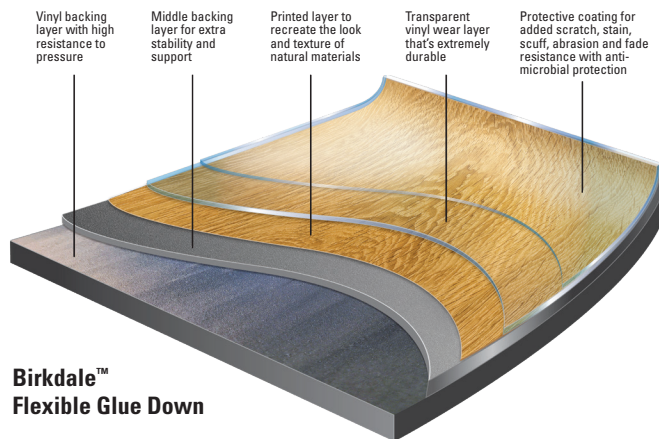
NBP006/NBP006L

Grand Oak-Telluride (V1)

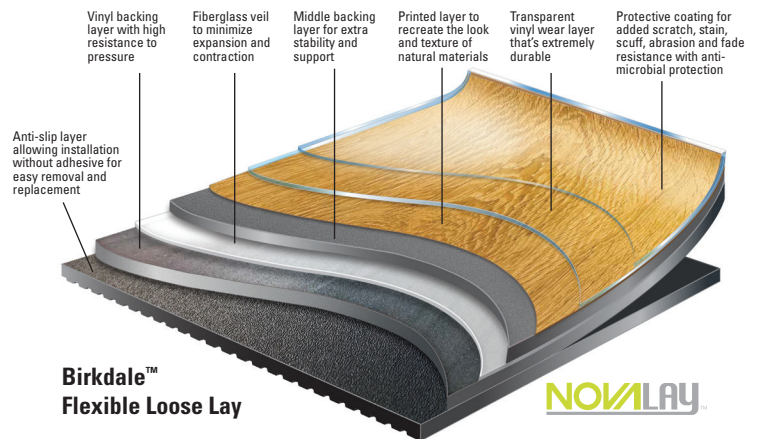
PRODUCT SPECIFICATIONS

Specifications	Glue Down	Loose Lay
Overall Thickness	2.5mm	5.0mm
Wear Layer Thickness	0.5mm (20 mil)	0.5mm (20 mil)
X-Large Plank Size	9" x 60"	9" x 59.72"
X-Large Tile Size	18" x 36"	18" x 36"
Multi-Width Plank Sizes	5" / 6" / 7" x 48"	N/A
Urethane Protective Coating	Yes	Yes
Edge and Grout Effect	MBV	MBV
FloorScore [®]	Yes	Yes
Residential Warranty	Limited Lifetime	Limited Lifetime
Heavy Commercial Warranty	10-Year	10-Year
X-Large Plank Packaging	10 pcs. (37.33 sq. ft.)	6 pcs. (22.4 sq. ft.)
X-Large Tile Packaging	9 pcs. (40.5 sq. ft.)	4 pcs. (18 sq. ft.)
Multi-Width Plank Packaging	18 pcs. (36 sq. ft.)	N/A
X-Large Plank Cartons/Pallet	72	60
X-Large Tile Cartons/Pallet	50	52
Multi-Width Plank Cartons/Pallet	60	N/A
X-Large Plank Weight/Carton	32.95	40.82
X-Large Tile Weight/Carton	35.75	32.81
Multi-Width Plank Weight/Carton	31.77	N/A

Specifications	Glue Down	Loose Lay
ASTM F1700-13 Solid Vinyl Floor Tile	Class III, Type B	Class III, Type B
ASTM F137-08 Flexibility	Passes	Passes
ASTM F386-11 Thickness	Passes	Passes
ASTM F410 Wear Layer Thickness	Passes	Passes
ASTM F925 Stain and Chemical Resistance (5 minute & 24 hour)	Passes	Passes
ASTM F1514 Heat Stability	Passes	Passes
ASTM F1515 Light Stability	Passes	Passes
ASTM F1914 Immediate & Residual Indentation	Passes	Passes
ASTM F2055 Size and Squareness	Passes	Passes
ASTM F2199-09 Dimensional Stability	Passes	Passes
ASTM E648-06 Critical Radiant Flux	Class 1	Class 1
ASTM E662 Smoke Density	Passes	Passes
ASTM F970-07 Static Load Limit	0.001" @ 250 psi	0.001" @ 250 psi
Static Load Limit (Modified)	>1,200 psi.	>1,200 psi



Birkdale™ Flexible Glue Down



Birkdale™ Flexible Loose Lay



Made with the highest standards

